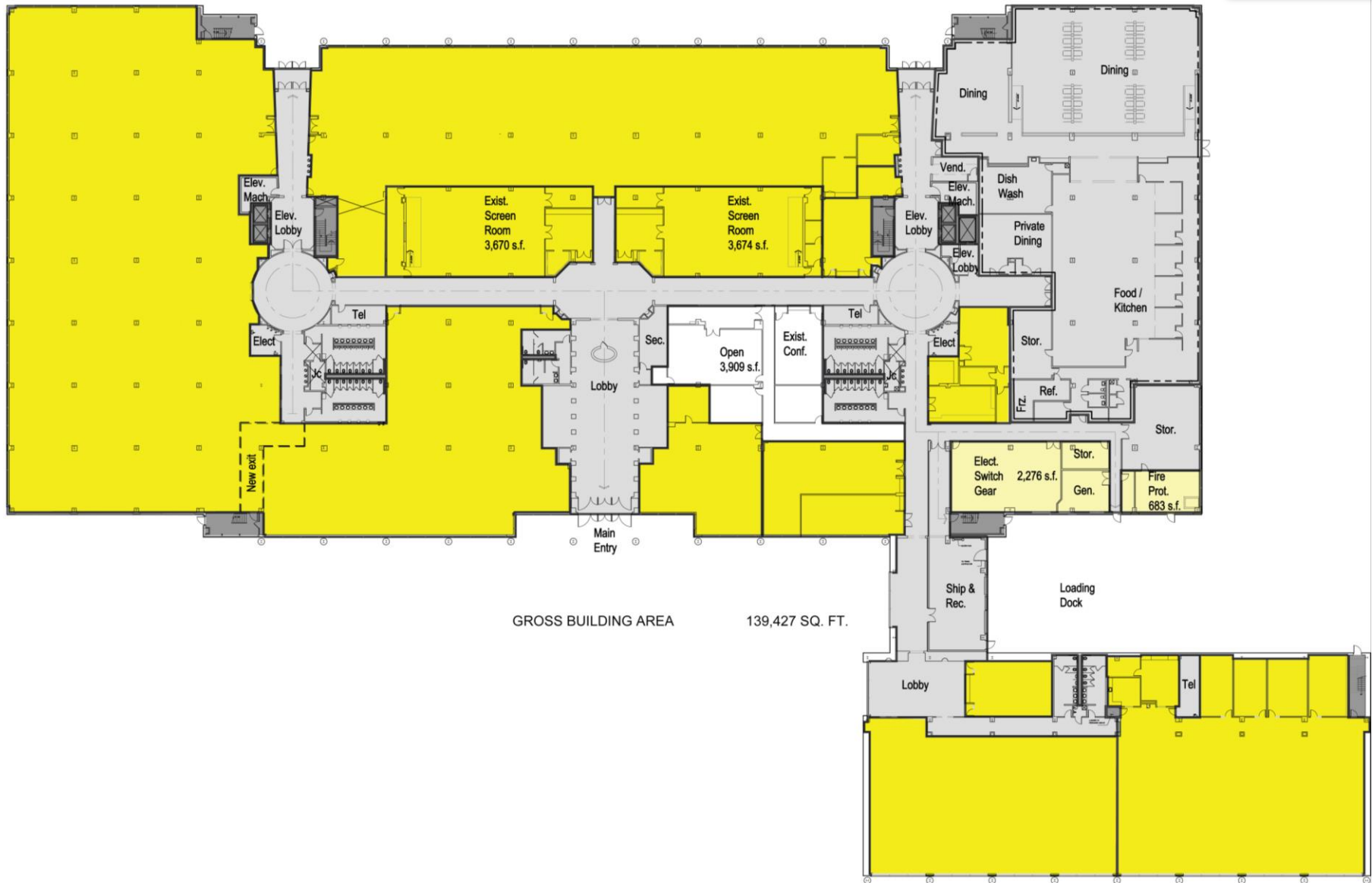


1999 Centerpoint Parkway – Pontiac, Michigan

Office For Lease | First Floor

50,000-
385,213
Square Feet
AVAILABLE



For more information, please contact:

STEVE GORDON

(248) 948 0101

sgordon@signatureassociates.com

SIGNATURE ASSOCIATES

One Towne Square, Suite 1200

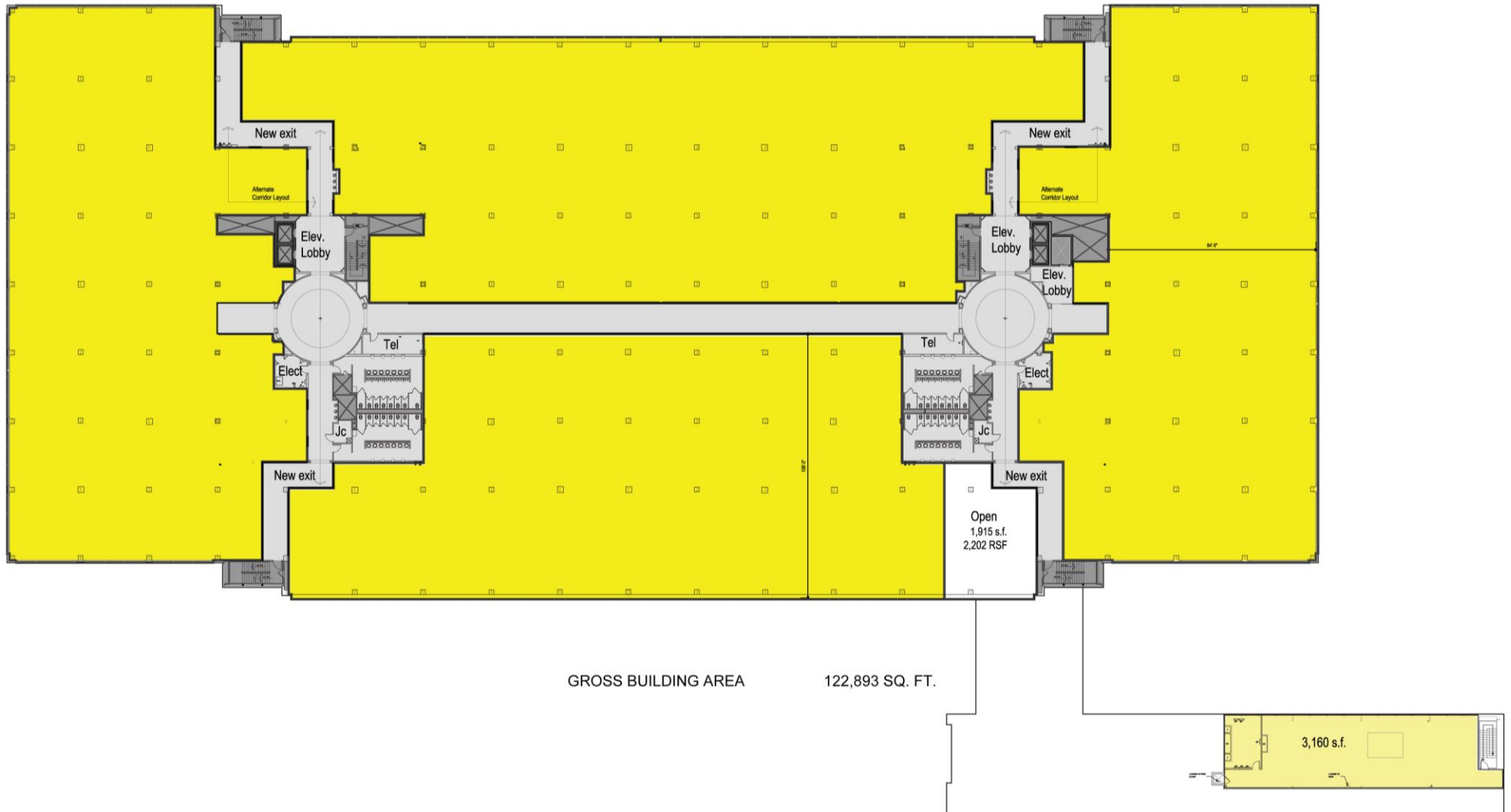
Southfield, MI 48076

www.signatureassociates.com

1999 Centerpoint Parkway – Pontiac, Michigan

Office For Lease | Second Floor

50,000-
385,213
Square Feet
AVAILABLE



For more information, please contact:

STEVE GORDON

(248) 948 0101

sgordon@signatureassociates.com

SIGNATURE ASSOCIATES

One Towne Square, Suite 1200

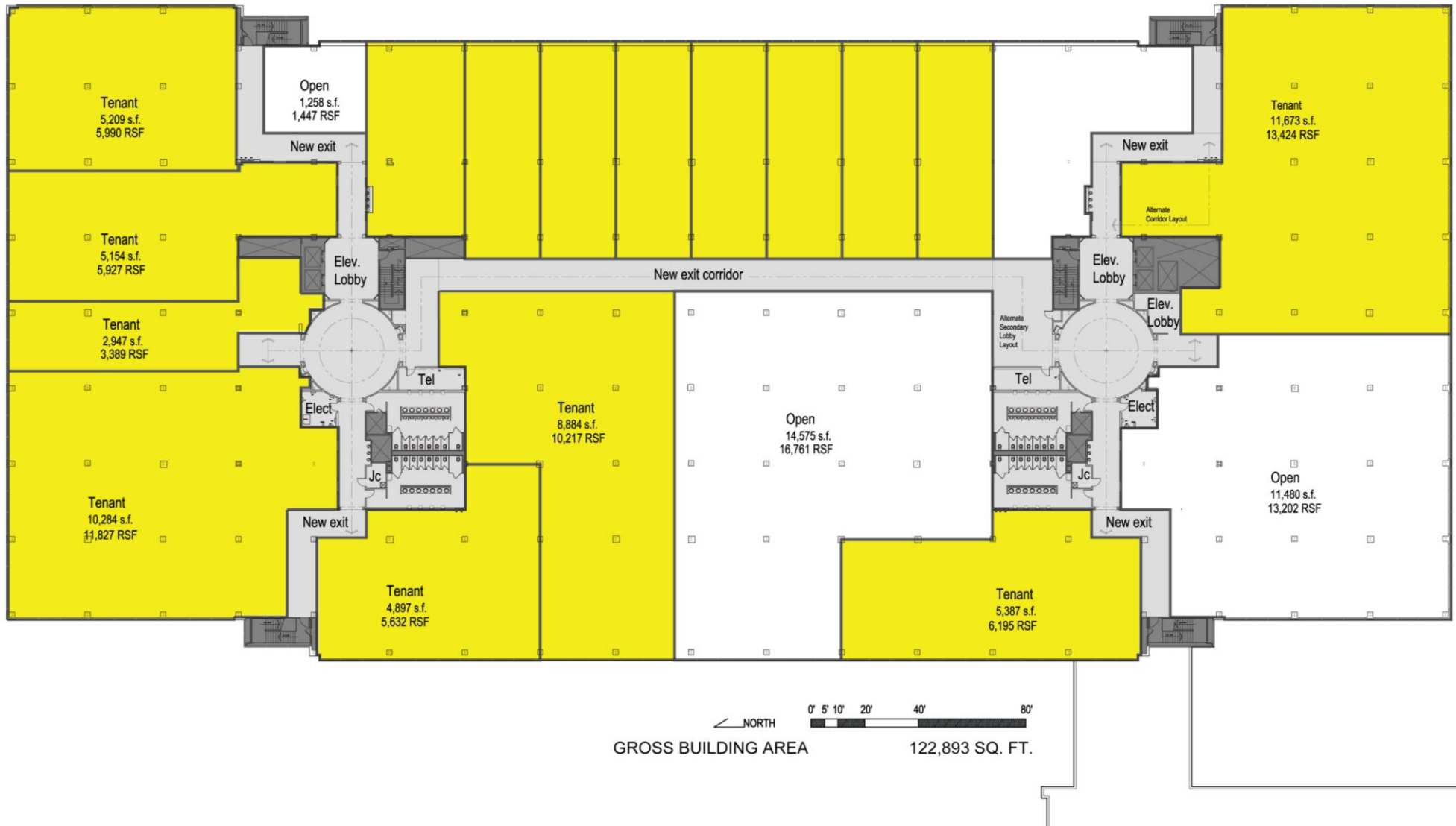
Southfield, MI 48076

www.signatureassociates.com

1999 Centerpoint Parkway – Pontiac, Michigan

Office For Lease | Third Floor

50,000-
385,213
Square Feet
AVAILABLE



For more information, please contact:

STEVE GORDON

(248) 948 0101

sgordon@signatureassociates.com

SIGNATURE ASSOCIATES

One Towne Square, Suite 1200

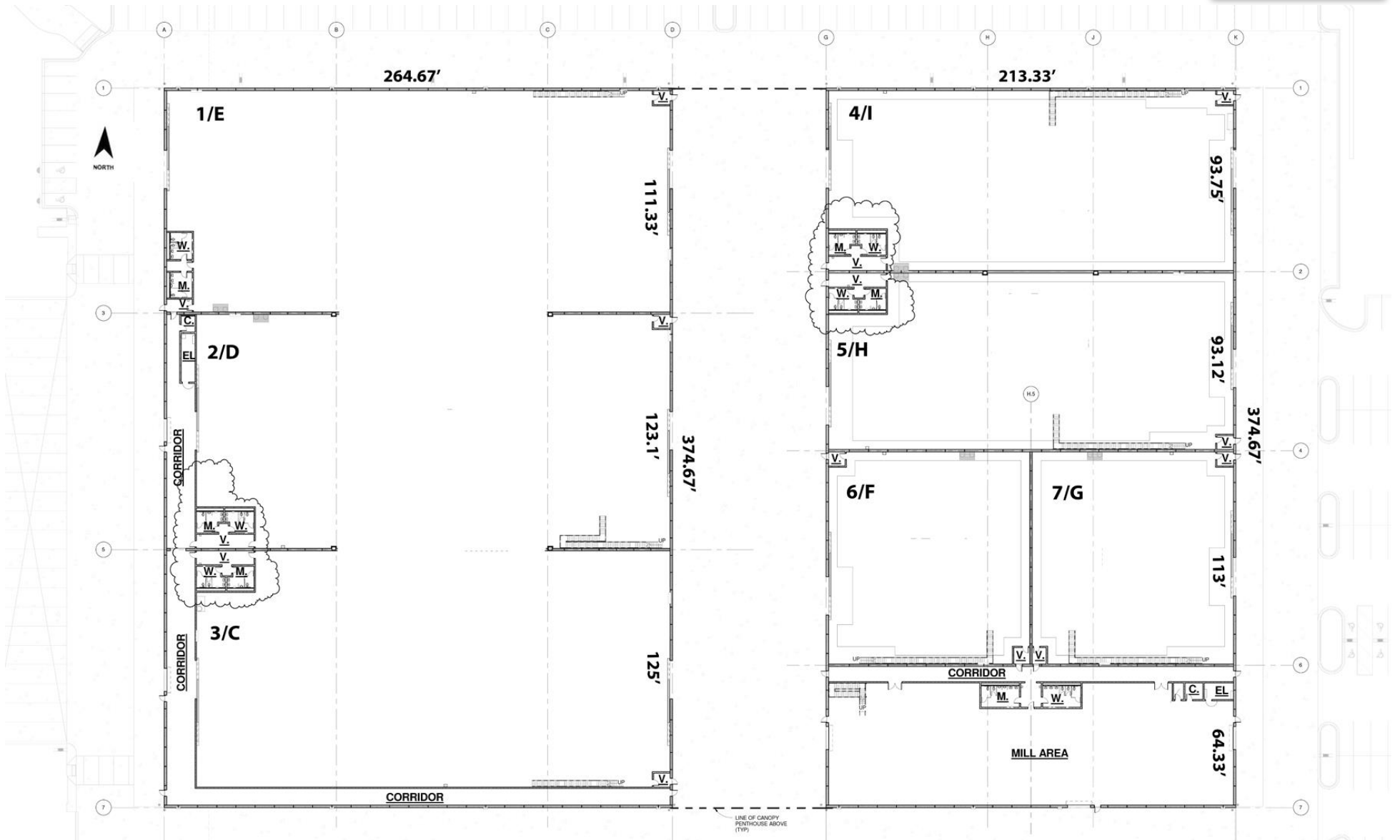
Southfield, MI 48076

www.signatureassociates.com

1999 Centerpoint Parkway – Pontiac, Michigan

Industrial For Lease | Floor Plan

50,000-
179,092
Square Feet
AVAILABLE



For more information, please contact:

STEVE GORDON

(248) 948 0101

sgordon@signatureassociates.com

SIGNATURE ASSOCIATES

One Towne Square, Suite 1200

Southfield, MI 48076

www.signatureassociates.com