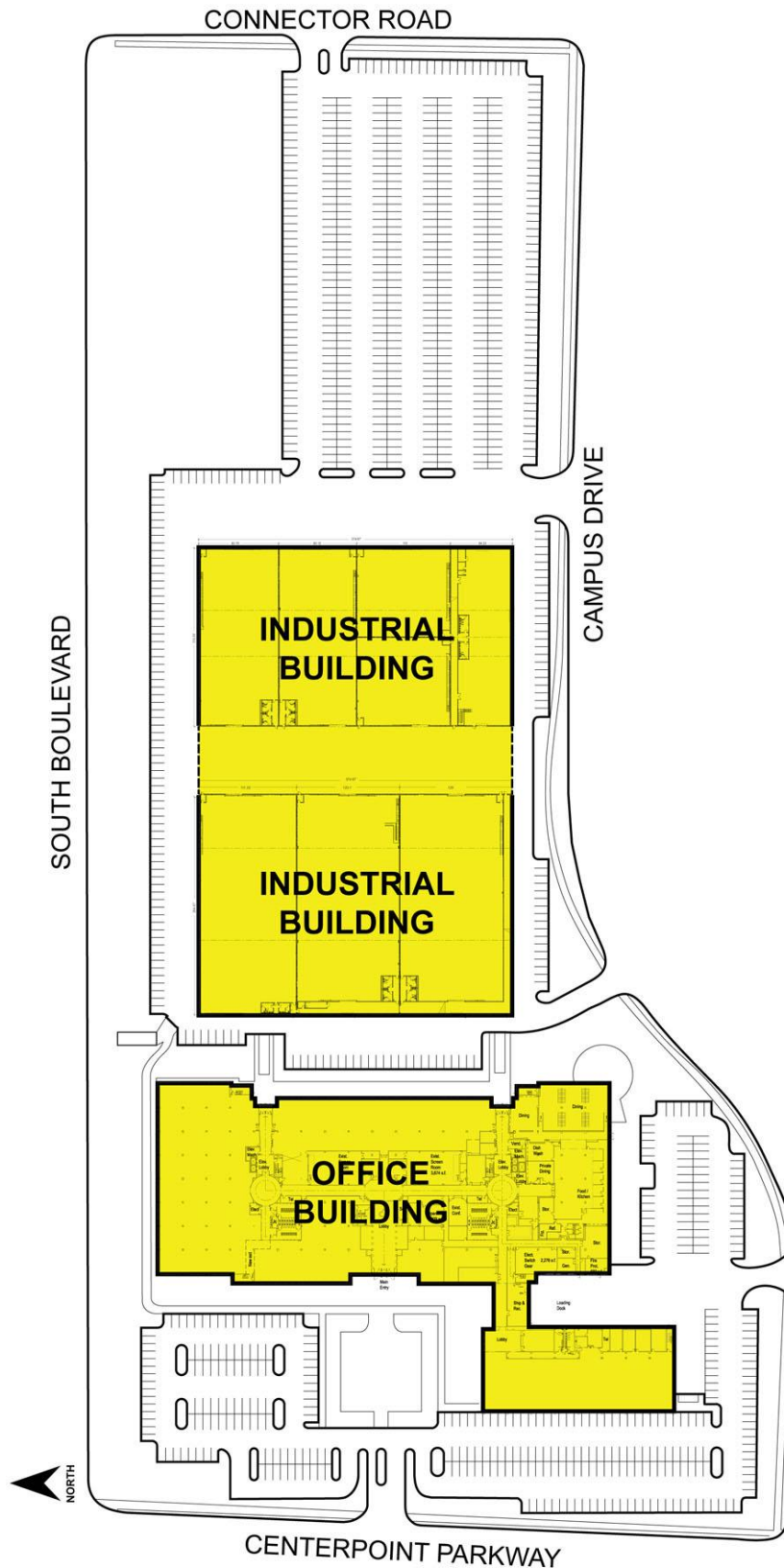


1999 Centerpoint Parkway - Pontiac, Michigan

Office/Industrial For Lease

50,000-
564,305
Square Feet
AVAILABLE



For more information, please contact:

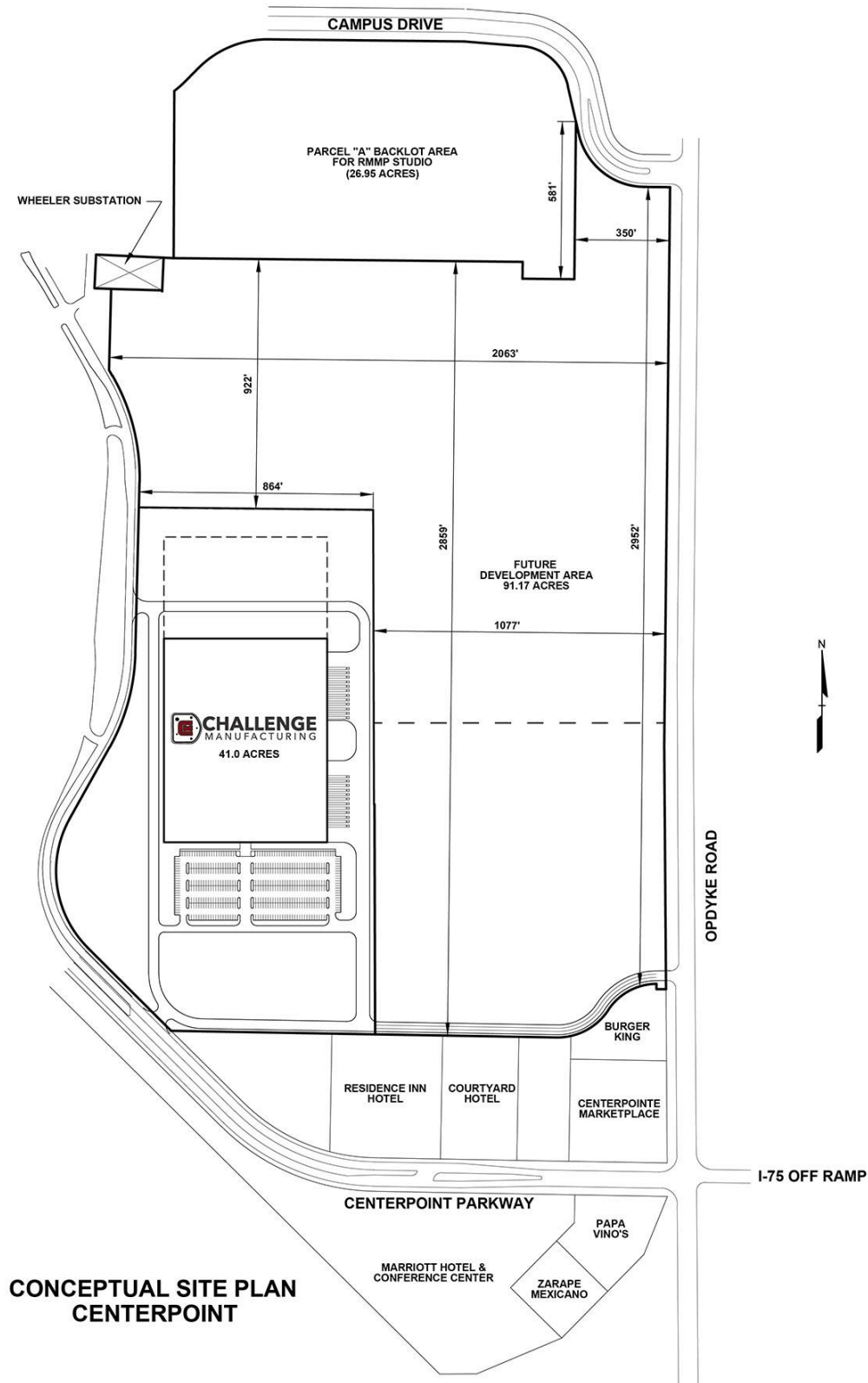
STEVE GORDON
(248) 948 0101
sgordon@signatureassociates.com

SIGNATURE ASSOCIATES
One Towne Square, Suite 1200
Southfield, MI 48076
www.signatureassociates.com

2100 S. Opdyke Road - Pontiac, Michigan

Vacant Land For Sale

10-110
Acres
AVAILABLE



For more information, please contact:

STEVE GORDON
(248) 948 0101
sgordon@signatureassociates.com

SIGNATURE ASSOCIATES
One Towne Square, Suite 1200
Southfield, MI 48076
www.signatureassociates.com