

LARGE LOTS AVAILABLE

17-225 ACRES

SHBPW

SOUTH HILL BUSINESS PARK WEST



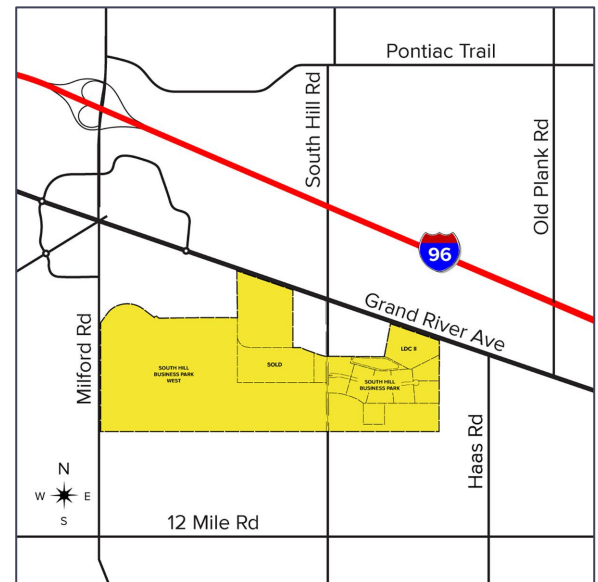
**SIGNATURE
ASSOCIATES**
KNOW SIGNATURE | KNOW RESULTS

GRAND RIVER AVENUE LYON TOWNSHIP, MI



PROPERTY FEATURES

- Lots from 17-225 acres available for major users
- Prime frontage on Grand River Ave, Milford Road & South Hill Road
- Exceptional development opportunity in Oakland County's fastest growing community
- Minutes from Ascension Providence Hospital, Huron Valley Sinai Hospital, and University of Michigan Hospital, three of Michigan's top healthcare providers
- Flexible zoning, ideal for a variety of uses



For more information, please contact:

STEVE GORDON

(248) 948 0101

sgordon@signatureassociates.com

SIGNATURE ASSOCIATES

One Towne Square, Suite 1200

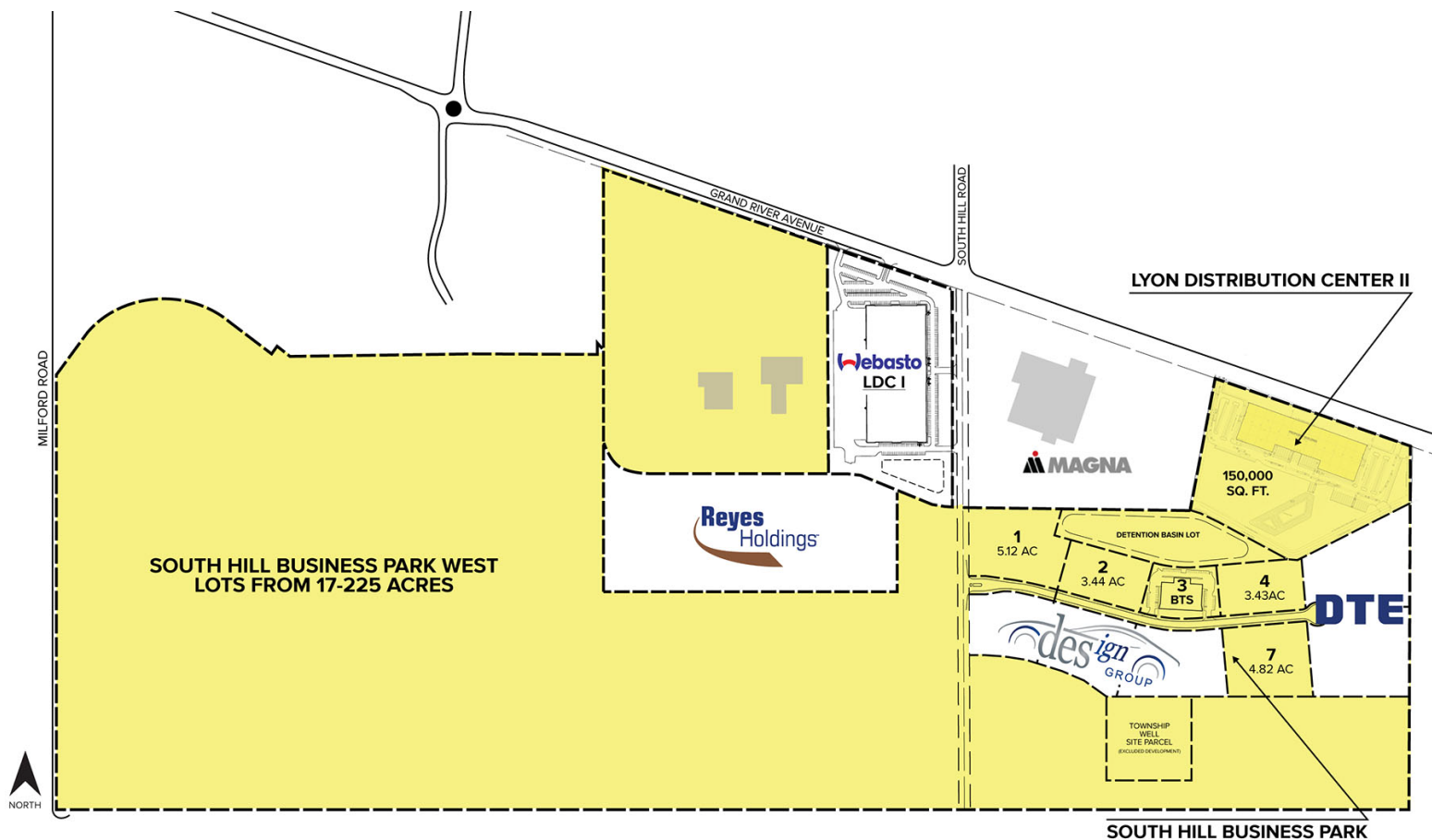
Southfield, MI 48076

www.signatureassociates.com

LARGE LOTS AVAILABLE | 17-225 ACRES

Grand River Avenue – Lyon Township, Michigan

Site Plan



For more information, please contact:

STEVE GORDON

(248) 948 0101

sgordon@signatureassociates.com

SIGNATURE ASSOCIATES

One Towne Square, Suite 1200

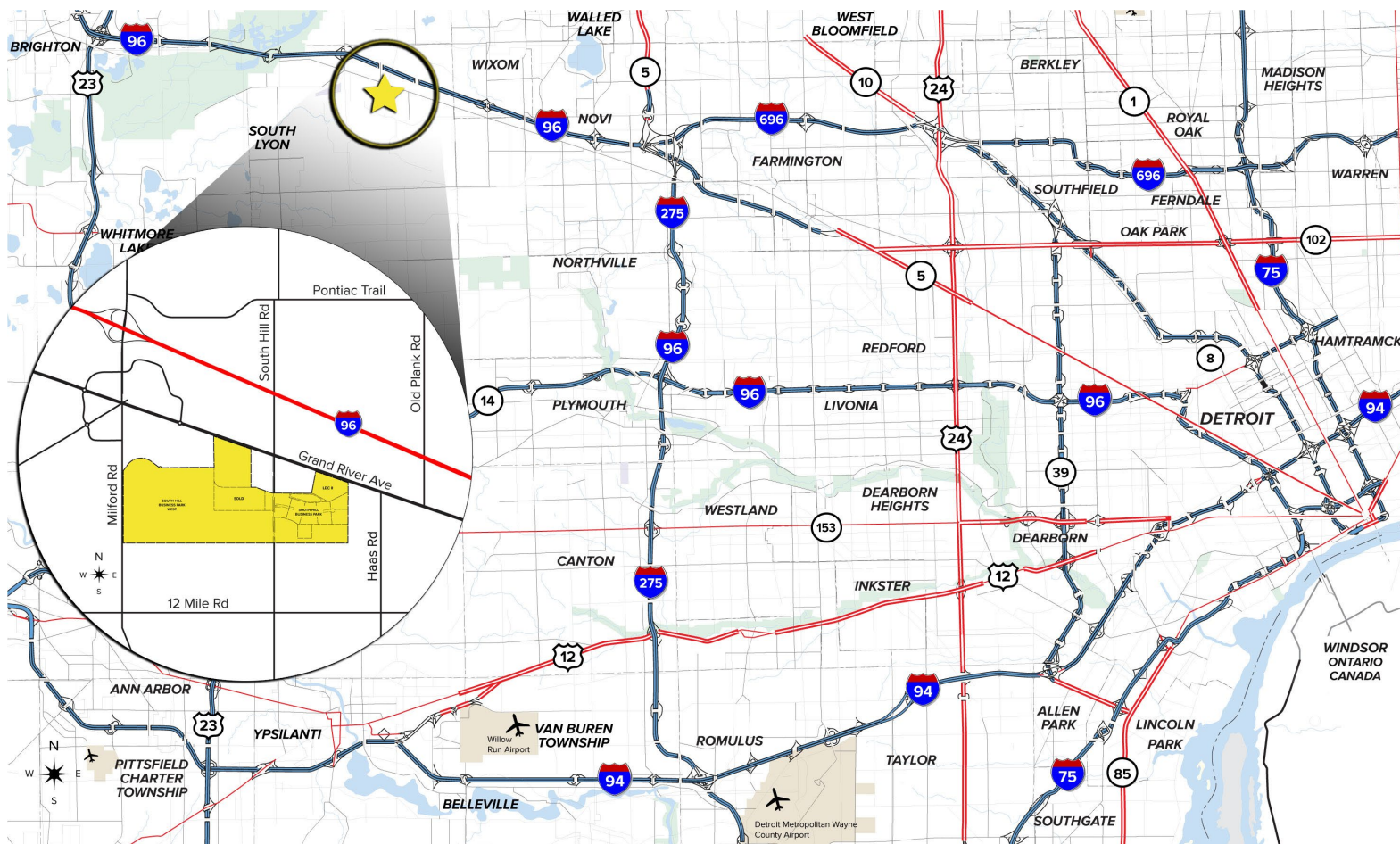
Southfield, MI 48076

www.signatureassociates.com

LARGE LOTS AVAILABLE | 17-225 ACRES

Grand River Avenue – Lyon Township, Michigan

Regional Map



- 35-minute drive to Detroit Metro Airport and Flint Bishop Airport
- Water and sewer on-site
- Convenient I-96 freeway access to major businesses, industrial, and automotive headquarters in the region
- High average daily traffic counts on I-96 freeway, Milford Rd and Grand River Ave

DEMOGRAPHICS (5-MILE RADIUS)

| | |
|-----------------------|-----------|
| POPULATION: | 74,573 |
| HOUSEHOLD INCOME: | \$140,860 |
| NUMBER OF BUSINESSES: | 2,997 |
| DAYTIME EMPLOYEES: | 40,822 |

For more information, please contact:

STEVE GORDON

(248) 948 0101

sgordon@signatureassociates.com

SIGNATURE ASSOCIATES
One Towne Square, Suite 1200
Southfield, MI 48076
www.signatureassociates.com